



challenges  
abroad

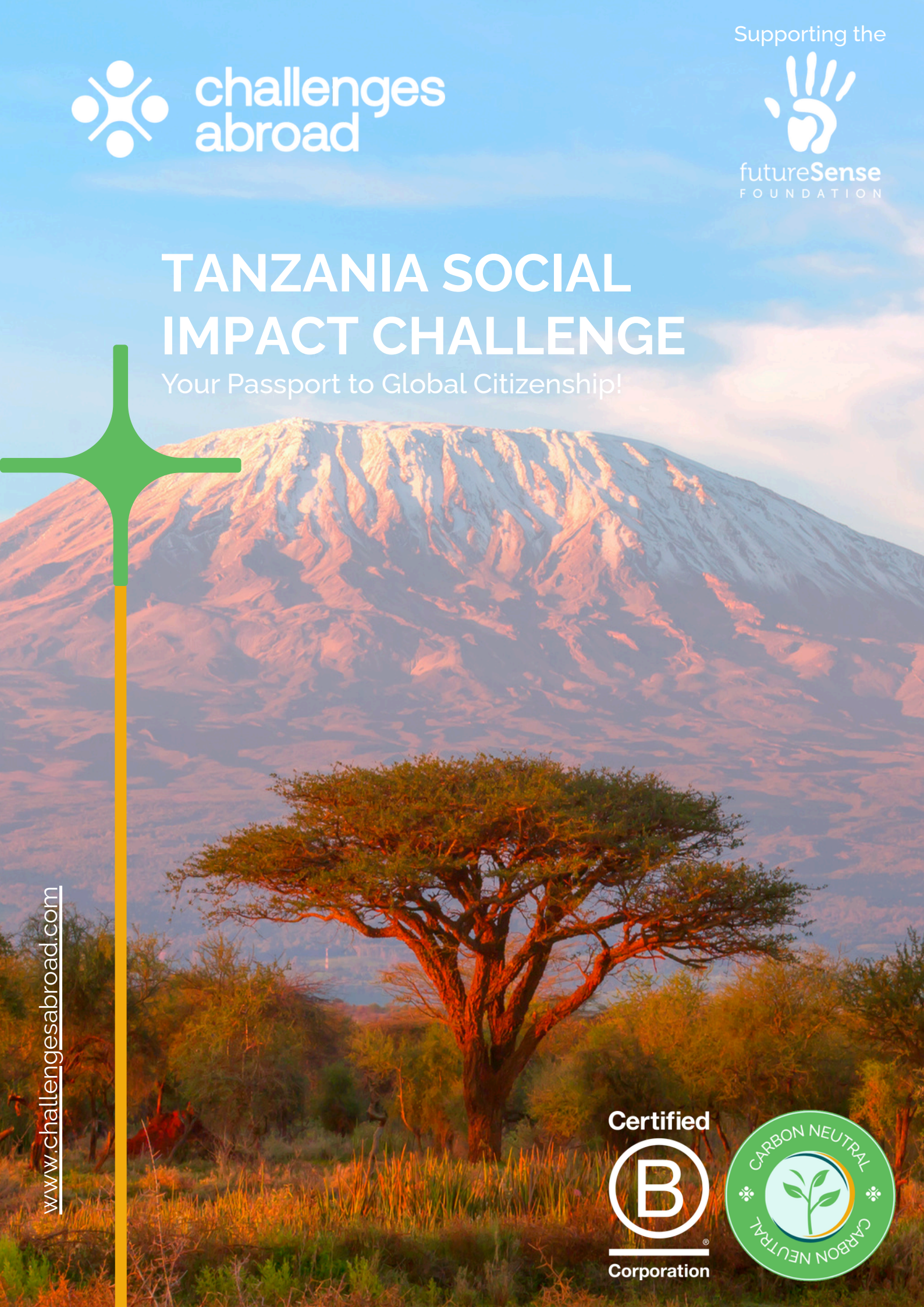
Supporting the



futureSense  
FOUNDATION

# TANZANIA SOCIAL IMPACT CHALLENGE

Your Passport to Global Citizenship!



[www.challengesabroad.com](http://www.challengesabroad.com)

Certified



Corporation





## Your Journey Starts in Tanzania

Tanzania is famous for its sweeping savannahs, iconic wildlife, and the towering peak of Mount Kilimanjaro, but beyond the safari trails lies a side of the country few truly experience. In the rural outskirts of **Arusha**, surrounded by small villages and views of Mount Meru, the Tanzania Social Impact Challenge begins.

Here, you'll connect with local communities and experience daily life in a warm, welcoming environment. Every day offers the chance to support health initiatives while gaining a deeper understanding of Tanzanian culture and the resilience of its people.



# Challenge Snapshot

## The Challenge

In Arusha, Tanzania, rural communities face educational challenges due to limited access, few trained teachers, and under-resourced schools. There is a growing need for community-based education and support.

## The Goal





To **increase quality and access to education in Arusha and surrounds.**



## The Solution (where you come in)

By joining this **team of global changemakers**, you will be helping us **address these barriers at rural schools in Arusha.** Using **YOUR skills**, you will **design hands-on and engaging activities to inspire young learners** in their education.

## What's in it for you?

-  **Make friends for life** as you connect with other Global Citizens from across Australia
-  **Boost your employability** by gaining transferrable skills such as teamwork, communication, adaptability and more!
-  **Make a real impact** on the world as you work towards sustainable development projects.
-  **Experience something new, fill your camera roll with life-long memories and have an unforgettable adventure!**



**Location:**  
Arusha



**Upcoming Dates:**  
[Click here to view our website](#)



**Cost:**  
\$1,850



**Duration:**  
15 days





# The Essentials



## Accommodation & Meals

You will stay in **shared dorm-style rooms and bathrooms**. You'll likely be sharing your room with **2-3 other participants**. While you will be provided with home comforts, these will be different to your usual standards, but all part of the challenge!

We provide **3 vegetarian meals per day Monday-Friday** (we can accommodate to further dietary requirements such as vegan, gluten free, nut free and other allergies), with weekends being your free time to explore local restaurants!

## In-Country Transport

Any **required transport for project work and airport pick-up and drop-off**. Our team can also help you organize transport so you can explore the area in your free time.

## In-Country Support

As well as supporting you in your project work, our team will be a **24/7 contact for you during your time overseas...** they'll also have the best recommendations on how to spend your free time!

## Pre-Departure Support

We will provide you with a **Welcome Pack, Packing List and Program Brief to help you prepare** for your travels. Our team are there every step of the way for extra support, and we'll organize a **pre-departure meeting 6-weeks before you go** to make sure everyone is on the same page and ready for the adventure.



Global Citizen, Natan'El

“The pre-departure support is unparalleled. There is a lot of room for challenging yourself and personal growth - definitely a once in a lifetime opportunity that shouldn't be passed up!”



[Check out more FAQs here!](#)



# Sample Itinerary

Your program is **customized to meet both the interests & experience of your team, as well as current community needs**. We will confirm specific program activities and schedule in your pre-departure meeting and briefing pack around **6-8 weeks before you travel**. In the meantime, here is a sample itinerary and activities you could be involved in:

## Arrival & Orientation

Touch down at **Kilimanjaro International Airport** and get ready to begin your journey! A member of our local team will be there to welcome you and take you to your new home for the next 2-weeks. Your orientation will include:

- Culture and language workshop
- Full introduction to your program & schedule
- A welcome dinner & local tour with your team

**You'll have plenty of time to settle in, explore, and start feeling at home in your new community.**



## Project Days - Community Impact

Your weekdays will be filled with **meaningful community engagement!** Working closely with local schools and educators, you'll **design and deliver hands-on workshops that support both children's learning and broader community goals** - helping to build confidence, spark curiosity, and strengthen local education.

**Workshop themes might include:** Conversational English, STEM activities, Creative arts, Environmental awareness.

Each day you'll also have **dedicated time to plan & prepare**, ensuring your workshops are impactful and engaging.

## Departure

As your program comes to an end, it's time to **say goodbye to your new friends and the community that has been your home**. This morning, you'll either travel with our team to the airport for your flight home or onward journey if you're planning even more incredible experiences while overseas.



# Discover Tanzania

## Evenings & Weekends - Time to Explore!

This is your time to make the most of everything Cambodia has to offer:

**Sample local restaurants**

**Participate in traditional Nepalese cooking classes**

**Explore local Thangka painting schools**

**Experience the vibrancy of Durbar Square**

**Try your hand at pottery - a significant part of Nepal's history**

There are endless ways to soak up the culture!

We recommend spending your free weekend immersing in the local culture even more - check out the **local Masai Market**, visiting the **Cultural Heritage Centre** in Arusha or taking a dip in the beautiful and relaxing **hot springs** - the perfect mix of adventure, culture and discovery!



[Find more travel inspo in our blog!](#)





# What Next?

## Sign up!

All you need to do is apply on our [website](#) and pay the **\$250 booking deposit**. Once accepted, you can **pay the remainder of your program fee in fortnightly, monthly or quarterly installments** leading up to your challenge. Your final payment is due eight weeks before departure.

If you have any questions or need any further support, please get in touch with our team:

 [hello@challengesabroad.com](mailto:hello@challengesabroad.com)

We can also add you to a **group chat on WhatsApp** so that you can connect with others who are interested in joining the challenge or are even signed up and preparing to travel!

For more insights on what your Challenges Abroad experience could look like, follow us on:



@challengesabroad



@challengesabroad







The Nepal team were amazing and provided support throughout the entire program. They went above and beyond in ensuring we were safe, had fun, and learnt about a new culture.

Global Citizen, Kaitlyn



## Things to start considering:

-  International flights
-  Travel insurance (might be covered by your university)
-  Visas
-  Vaccinations

## Elevate your Experience

If you're keen to take on an extra challenge, becoming a **Challenge Leader** will help you develop your leadership and team management skills, as well as a whole heap of other qualities that will set you up for your career or future study.

Ready to become a global leader? Find out more and apply [here](#).



